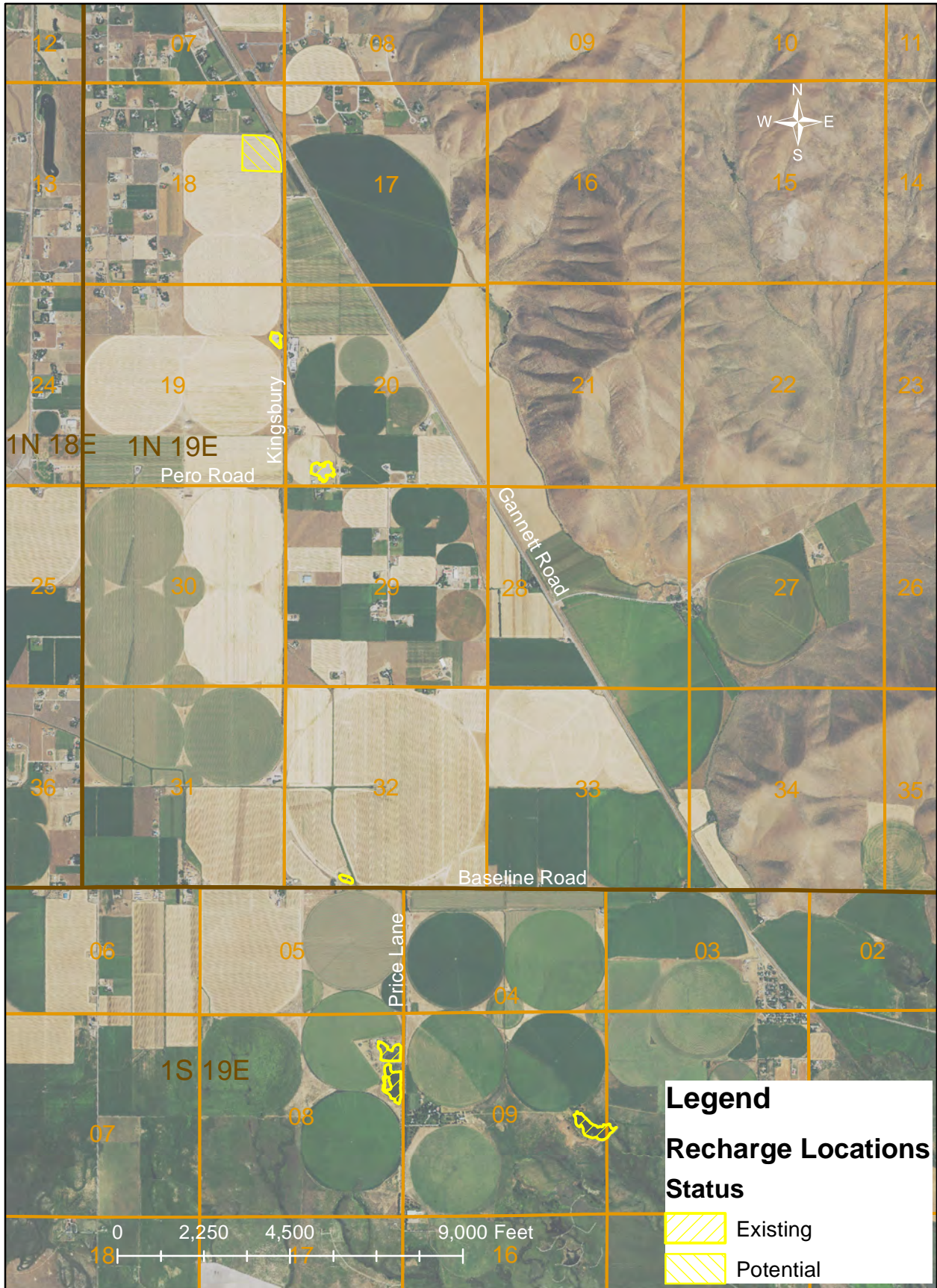


Ground Water Districts Recharge Proposals

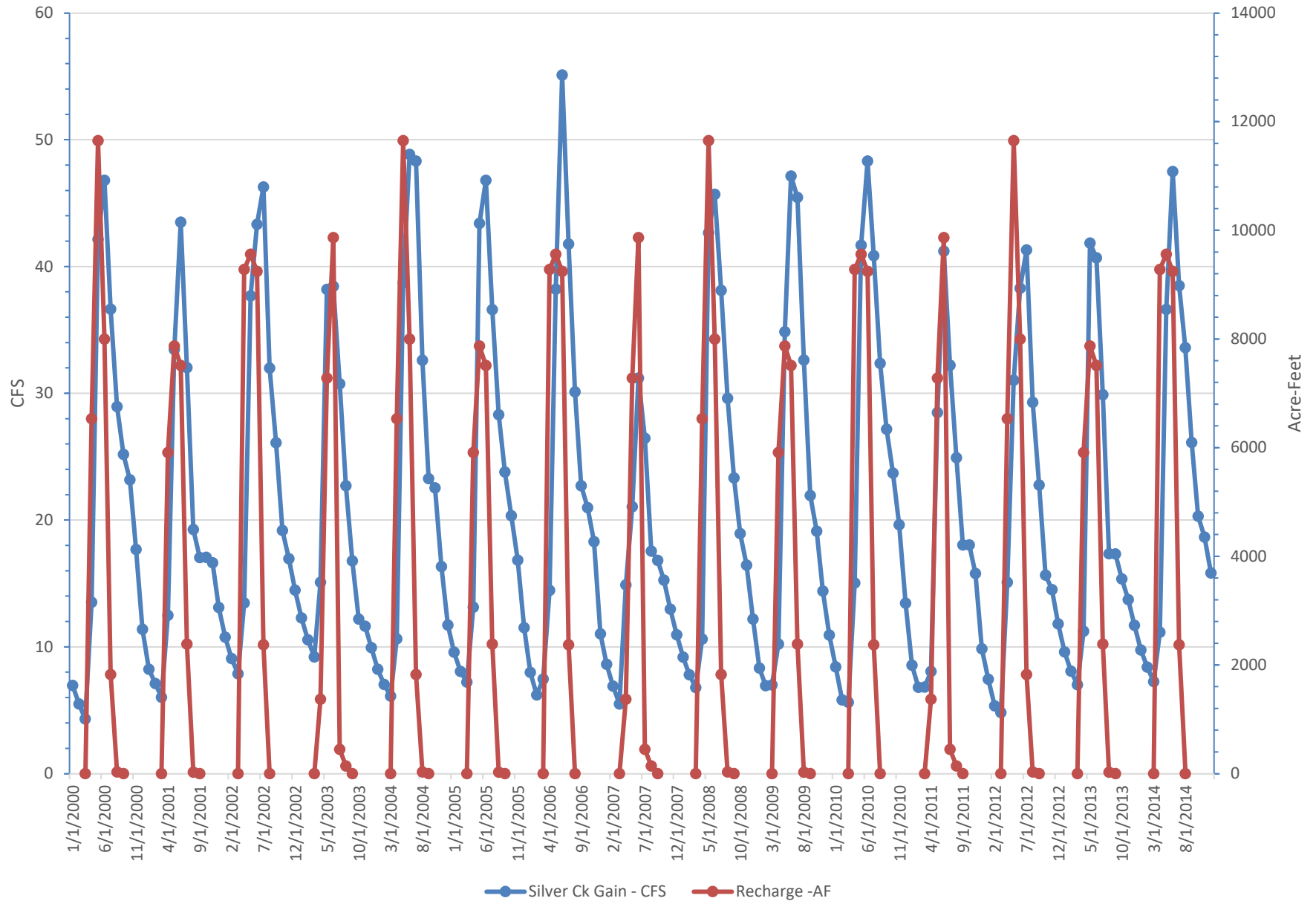


Based on 2019 NAIP

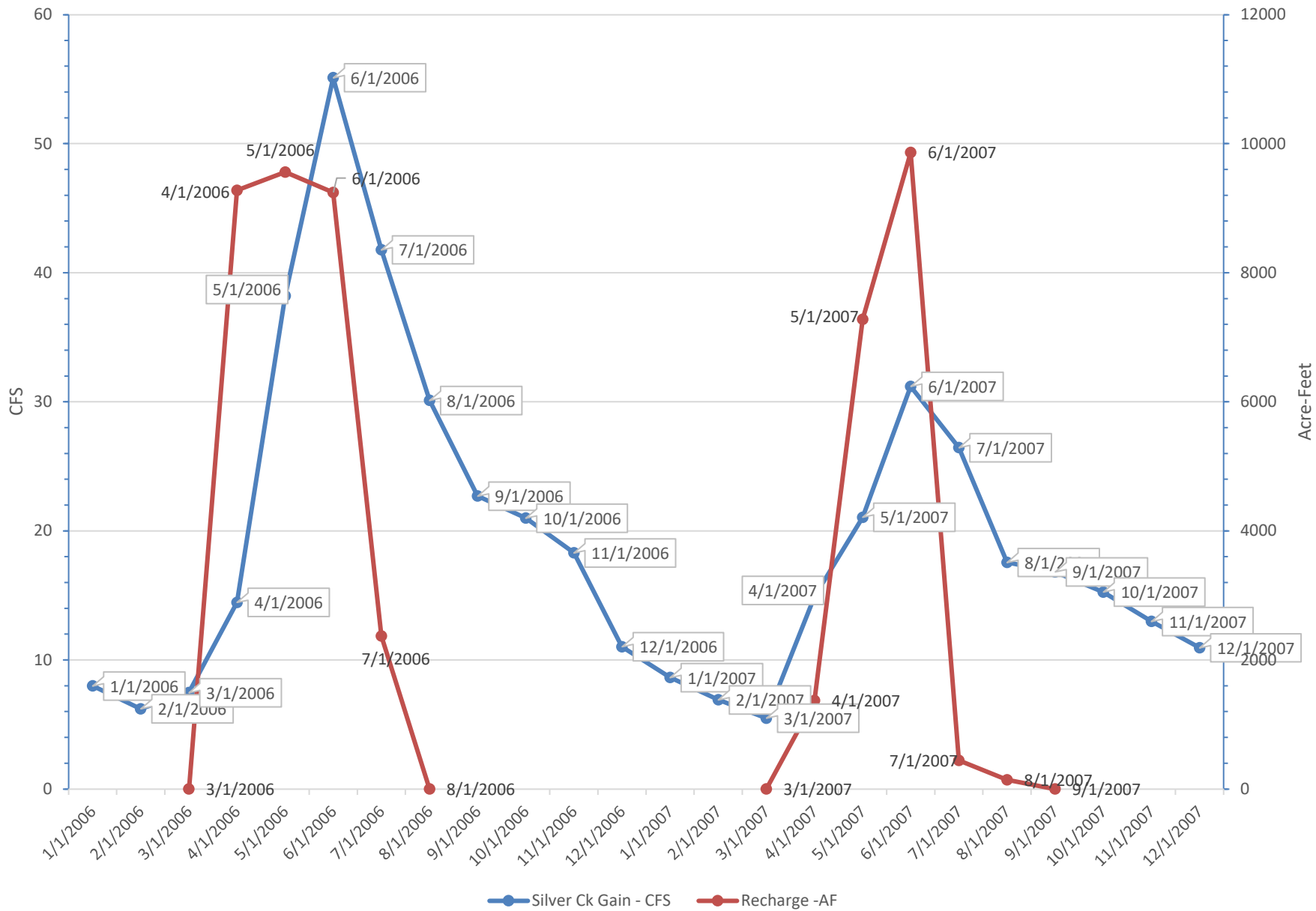
| Water Available for Diversion Less 20% Conveyance Acre-Feet | | | | |
|--|-------|-------|-------|-------|
| | 2013 | 2014 | 2015 | 2016 |
| April | 5913 | 9279 | 1372 | 6532 |
| May | 7872 | 9558 | 7279 | 11650 |
| June | 7511 | 9244 | 9864 | 7999 |
| July | 2387 | 2372 | 445 | 1824 |
| August | 29 | 0 | 142 | 33 |
| Total | 23712 | 30453 | 19102 | 28037 |

| Tom O'Gara - Pits in AF | | | | | |
|--------------------------------------|-------|-------|-------|-------|-------|
| | 2015 | 2016 | 2017 | 2018 | 2019 |
| April | 329 | 447 | 597 | 642 | 298 |
| May | 1,307 | 841 | 1,090 | 739 | 554 |
| June | 557 | 447 | 783 | 741 | 625 |
| July | 25 | 118 | 999 | 74 | 648 |
| August | 60 | 0 | 485 | 0 | 109 |
| Sept | 94 | 34 | 245 | 0 | 211 |
| Oct | 360 | 401 | 0 | 75 | 412 |
| Nov | 360 | 88 | 0 | 136 | 69 |
| Totals | 3,092 | 2,376 | 4,199 | 2,407 | 2,925 |
| Tom O'Gara - Wildlife/Recharge in AF | | | | | |
| | 2015 | 2016 | 2017 | 2018 | 2019 |
| April | 376 | 146 | 393 | 209 | 186 |
| May | 1,171 | 849 | 549 | 1,243 | 1,045 |
| June | 846 | 1,097 | 321 | 657 | 994 |
| July | 515 | 487 | 423 | 329 | 924 |
| August | 332 | 271 | 160 | 215 | 504 |
| Sept | 268 | 80 | 206 | 168 | 84 |
| Oct | 195 | 151 | 25 | 28 | 26 |
| Nov | 94 | 238 | 0 | 1 | 11 |
| Totals | 3,795 | 3,319 | 2,076 | 2,848 | 3,775 |
| Total O'Gara | 6,887 | 5,695 | 6,275 | 5,255 | 6,700 |

Recharge in the Triangle and Gains to Silver Creek



Recharge in the Triangle and Gains to Silver Creek



| Ground Water Pumping Depletion In Acre-Feet based on WRV 1.1 | | | | | | | | |
|---|---------|-------------------|-------------------|---------------------|---------------------|----------------|----------------------|---------------------|
| | WRV 1.1 | Above Glendale | Below Glendale | % Above Glendale | % Below Glendale | Hailey SWSI | Hailey AF Apr-Sep | D45 AF Diversion |
| 1995 | 16,915 | 10,981 | 5,934 | 65% | 35% | 3.6 | 501,377 | 40,285 |
| 1996 | 23,155 | 5,321 | 17,834 | 23% | 77% | 1.7 | 334,497 | 37,702 |
| 1997 | 22,547 | 5,019 | 17,528 | 22% | 78% | 3.4 | 499,890 | 40,957 |
| 1998 | 12,741 | 4,076 | 8,664 | 32% | 68% | 2.6 | 366,269 | 46,132 |
| 1999 | 21,702 | 6,093 | 15,608 | 28% | 72% | 2 | 334,795 | 50,119 |
| 2000 | 25,553 | 5,448 | 20,105 | 21% | 79% | -0.9 | 189,748 | 33,519 |
| 2001 | 38,283 | 10,203 | 28,078 | 27% | 73% | -3.4 | 103,676 | 36,970 |
| 2002 | 39,835 | 11,200 | 28,634 | 28% | 72% | -2.3 | 152,827 | 33,168 |
| 2003 | 36,239 | 10,318 | 25,921 | 28% | 72% | -0.4 | 220,976 | 31,294 |
| 2004 | 29,206 | 7,872 | 21,334 | 27% | 73% | -2.6 | 136,167 | 35,513 |
| 2005 | 26,863 | 7,658 | 19,205 | 29% | 71% | 0.4 | 241,797 | 34,461 |
| 2006 | 24,281 | 8,689 | 15,593 | 36% | 64% | 3.1 | 480,297 | 51,119 |
| 2007 | 40,976 | 10,968 | 30,008 | 27% | 73% | -3.1 | 116,574 | 30,986 |
| 2008 | 33,475 | 8,659 | 24,815 | 26% | 74% | -0.7 | 199,030 | 33,750 |
| 2009 | 26,073 | 6,650 | 19,422 | 26% | 74% | 0.9 | 258,748 | 40,690 |
| 2010 | 23,370 | 5,829 | 17,540 | 25% | 75% | -0.1 | 221,200 | 32,696 |
| 2011 | 23,881 | 6,415 | 17,466 | 27% | 73% | 1.5 | 321,430 | 38,375 |
| 2012 | 48,166 | 11,051 | 37,114 | 23% | 77% | 1.2 | 271,916 | 42,310 |
| 2013 | 44,178 | 8,341 | 35,837 | 19% | 81% | -1.7 | 153,600 | 34,420 |
| 2014 | 45,829 | 11,817 | 34,011 | 26% | 74% | -1.2 | 162,115 | 32,148 |

The WRV 1.1 ground water model estimates changes to ground water contributions to river reaches for the period 1995 - 2014.

The river reaches are broken down as follows:

Big Wood River near Ketchum to Hailey: K-H

Big Wood River Hailey to Stanton Crossing: H-S

To better separate the impacts to the lower Big Wood River the Hailey to Stanton Crossing segment is divided as:

Big Wood River Hailey to Heart Rock Ranch: H-R

Big Wood River Heart Rock Ranch to Stanton Crossing: R-S

Willow Creek: W

Silver Creek at Sportsman Access: SC

Big Wood Total: K-H + H-S + W

| 1995 - 2014 Model Results | | | | | | | | | | | | | | | | |
|---------------------------|-----------|------|-----------|------|-----------|-----|-----------|------|-----------|-----|-----------|------|-----------|-----|----------------|------|
| | K-H | | H-S | | R-S | | H-R | | W | | SC | | R-S + W | | Big Wood Total | |
| | Acre-Feet | CFS | Acre-Feet | CFS | Acre-Feet | CFS | Acre-Feet | CFS | Acre-Feet | CFS | Acre-Feet | CFS | Acre-Feet | CFS | Acre-Feet | CFS |
| Jan | 164 | 2.6 | 318 | 5.2 | 102 | 1.7 | 216 | 3.5 | 132 | 2.1 | 705 | 11.5 | 233 | 3.8 | 613 | 9.9 |
| Feb | 139 | 2.3 | 253 | 4.2 | 76 | 1.3 | 176 | 3.0 | 104 | 1.7 | 558 | 9.4 | 180 | 3.0 | 495 | 8.3 |
| Mar | 119 | 2.0 | 281 | 4.8 | 72 | 1.2 | 209 | 3.6 | 90 | 1.6 | 470 | 8.1 | 163 | 2.8 | 491 | 8.4 |
| Apr | 120 | 1.9 | 351 | 5.7 | 109 | 1.8 | 242 | 3.9 | 79 | 1.3 | 659 | 10.7 | 189 | 3.1 | 550 | 8.9 |
| May | 252 | 4.1 | 550 | 9.2 | 119 | 2.0 | 430 | 7.2 | 54 | 0.9 | 977 | 16.4 | 173 | 2.9 | 856 | 14.2 |
| Jun | 353 | 5.7 | 776 | 12.6 | 147 | 2.4 | 629 | 10.2 | 36 | 0.6 | 1363 | 22.2 | 183 | 3.0 | 1165 | 18.9 |
| Jul | 560 | 9.4 | 872 | 14.6 | 245 | 4.1 | 626 | 10.5 | 33 | 0.6 | 2033 | 34.2 | 279 | 4.7 | 1465 | 24.6 |
| Aug | 620 | 10.0 | 945 | 15.4 | 335 | 5.4 | 610 | 9.9 | 102 | 1.7 | 2369 | 38.5 | 437 | 7.1 | 1668 | 27.0 |
| Sep | 514 | 8.3 | 845 | 13.7 | 325 | 5.3 | 520 | 8.5 | 172 | 2.8 | 2121 | 34.5 | 497 | 8.1 | 1531 | 24.8 |
| Oct | 366 | 6.2 | 686 | 11.5 | 260 | 4.4 | 426 | 7.2 | 203 | 3.4 | 1663 | 28.0 | 463 | 7.8 | 1254 | 21.1 |
| Nov | 254 | 4.1 | 586 | 9.5 | 215 | 3.5 | 371 | 6.0 | 212 | 3.5 | 1300 | 21.1 | 427 | 7.0 | 1052 | 17.1 |
| Dec | 201 | 3.4 | 422 | 7.1 | 144 | 2.4 | 278 | 4.7 | 176 | 3.0 | 959 | 16.1 | 319 | 5.4 | 798 | 13.4 |
| Total/Avg | 3662 | 5.0 | 6884 | 9.5 | 2150 | 3.0 | 4733 | 6.5 | 1394 | 1.9 | 15177 | 20.9 | 3544 | 4.9 | 11939 | 16.4 |
| Irrig-Seas | 2420 | 6.6 | 4339 | 11.9 | 1281 | 3.5 | 3057 | 8.4 | 477 | 1.3 | 9522 | 26.1 | 1758 | 4.8 | 7236 | 19.7 |
| Non-Irrg | 1241 | 3.4 | 2545 | 7.1 | 869 | 2.4 | 1676 | 4.7 | 917 | 2.5 | 5655 | 15.7 | 1786 | 5.0 | 4703 | 13.0 |